

**Saint George's Memorial Church**

**Elverdingsestraat 1**

**8900 Ieper**

**Belgium**

**INVENTORY  
OF  
PLAQUES AND  
MEMORIALS**

**COMPILED BY**

**MAURICE McBRIDE**

**November 1998**

**Revised 9<sup>th</sup> September 2001**

**Revised October 2012 – April 2014**

## KEY

PLAQUES OR MEMORIALS RELATING TO INDIVIDUAL PERSONS ARE LISTED SEPARATELY FROM THOSE OF REGIMENTS AND ASSOCIATIONS.

REGIMENTS AND ASSOCIATIONS ARE ON THE ODD NUMBERED PAGES, AND INDIVIDUAL PERSONS ON THE EVEN NUMBERED PAGES.

LEFT OR RIGHT ASSUMES THAT YOU ARE AT THE BAPTISTRY AND LOOKING TOWARDS THE ALTER.

WINDOWS AND SEAT ROWS ARE NUMBERED FROM THE FRONT TOWARDS THE BAPTISTRY.

### WINDOWS (AND THE PLAQUES BELOW THEM)

AW            ALTER WINDOW

OW            ORGAN WINDOW

1WNL        1<sup>ST</sup> WINDOW ON THE LEFT OF THE NAVE

1WNLBUT                    1<sup>ST</sup> WINDOW LEFT BUTTRESS

2WNL        2<sup>ND</sup> WINDOW ON THE LEFT OF THE NAVE

2WNLBUT                    2<sup>ND</sup> WINDOW LEFT BUTTRESS

3WNL        3<sup>RD</sup> WINDOW ON THE LEFT OF THE NAVE

3WNLBUT                    3<sup>RD</sup> WINDOW LEFT BUTTRESS

1WNR        1<sup>ST</sup> WINDOW ON RIGHT OF THE NAVE

2WNR        2<sup>ND</sup> WINDOW ON RIGHT OF THE NAVE

3WNR        3<sup>RD</sup> WINDOW ON RIGHT OF THE NAVE

### WALL MOUNTED PLAQUES

AWR or AWL        COLUMNS OF PLAQUES EITHER TO RIGHT OR LEFT OF THE ALTER

CWL1,2 or 3        1<sup>ST</sup>, 2<sup>ND</sup> OR 3<sup>RD</sup> COLUMN OF PLAQUES ON THE CHANCEL WALL LEFT

CWR1, 2 or 3        1<sup>ST</sup>, 2<sup>ND</sup> OR 3<sup>RD</sup> COLUMN OF PLAQUES ON THE CHANCEL WALL RIGHT

CSL or CSR        CHOIR STALLS LEFT OR RIGHT

AMD                PLAQUES AROUND THE INNER MAIN DOOR FROM THE PORCH INTO THE CHURCH

**LMD1, 2 or 3.**      **COLUMNS OF PLAQUES TO THE LEFT OF THE MAIN DOOR**

**PMDR**            **THE HANGING PANEL FOR THE SMALL PLAQUES TO THE LEFT OF THE MAIN DOOR**

**PMDL**            **SIMILAR PANEL TO THE RIGHT OF THE MAIN DOOR**

**BW1 to BW8**      **COLUMNS OF PLAQUES ALONG THE BACK WALL COUNTING FROM RIGHT TO LEFT**

**BWS**              **STANDARDS LAID UP ON BACK WALL**

**BAPL**             **BOARD OF PLAQUES TO LEFT OF BAPTISTRY ENTRANCE**

**BAPR**             **BOARD OF PLAQUES TO RIGHT OF BAPTISTRY ENTRANCE**

**RW1 to7**         **BELOW FRENCH MEMORIAL**

**FML/FMR**        **TO LEFT OR RIGHT OF FRENC MEMORIAL**

**THE OAK LECTERNS IN FRONT OF THE FRONT ROW OF SEATS BELOW THE PULPIT AND AT THE MAIN DOOR**

**PLFL, PLFR, PLRL, PLRR.**      **PEW LECTERNS: FRONT LEFT OR RIGHT OR REAR LEFT OR RIGHT**

**MBC**              **MEMORIAL BOOK CABINET**

**BAPTISTRY**      **BAPTISTRY**

**CHAIRS**         **THE CHAIRS HAVE ROW NUMBERS FROM N1 TO N14, S1 TO S14 AND V (VESTRY). THE “N” CHAIRS ARE ON THE LEFT OF THE NAVE, AND THE “S” CHAIRS ARE ON THE RIGHT.**

**KNEELERS:**      **THERE IS A LIST OF KNEELERS AT THE END OF THE BOOK**

1

ABBOTSHOLME'S INTERNATIONAL Comm of Students  
 ACKROYD, H, Cpt, VC, MC, RAMC.  
 AECS  
 ALDENHAM SCHOOL  
 ALL WHO LOST THEIR LIVES IN THE YPRES SALIENT  
 ALLEYN'S SCHOOL  
 ANIMALS-ALL GOD'S CREATURES  
 ARGYLL & SUTHERLAND HIGHLANDERS 6<sup>TH</sup> BTTN  
 ARMY BRIGADE (64<sup>TH</sup>)  
 ARMY CADET FORCE  
 ARMY CORPS 1<sup>ST</sup>: 1<sup>ST</sup>, 2<sup>ND</sup> & 7<sup>TH</sup> DIVISIONS  
 ARNOLD HOUSE SCHOOL  
 ARTISTS RIFLES  
 ASHVILLE COLLEGE, HARROGATE  
 AUSTRALIA, COMMONWEALTH OF  
 AUSTRALIAN MEMORIAL (RETURNED FORCES IMPERIAL)  
 AYSGARTH SCHOOL

2WNL  
 3WNL  
 BW  
 1WNR  
 BW5  
 2WNR  
 BAPTISTRY  
 1WNL  
 PLFL  
 S13  
 BANNER  
 1WNLBUT  
 BW2  
 1WMR  
 BAPTISTRY  
 WMD  
 1WNLBUT

2

AIKMAN, Sgt  
 ANNESLEY, Cpt, THE HON ARTHUR  
 ANSELL, WILLIAM, Pte. 18162  
 ARNOLD Sydney (Sid)  
 ACHISON, 2<sup>ND</sup> LT, A.V. A/BDR, RG  
 AVIS, Pte Charles

N11  
 N11  
 BAPL  
 RW7  
 S9  
 N8

3

BEDFORD SCHOOL  
 BEDFORDSHIRE & HERTORDSHIRE REGIMENTAL ASS.  
 BEDFORDSHIRE REGIMENT  
 BEDFORDSHIRE REGIMENT 8<sup>TH</sup> (S) BTTN.  
 BEDFORDSHIRE REGIMENT 1<sup>ST</sup> BTTN  
 BERKSHIRE REGIMENT, ROYAL  
 BLACK WATCH, THE  
 BORDER REGIMENT  
 BAMFORD GIRL GUIDES, 1<sup>ST</sup>  
 BAMFORD RANGERS  
 BOLTON SCHOOL  
 BRENTWOOD SCHOOL  
 BRIDLINGTON SCHOOL  
 BRIGADE OF GUARDS  
 BRIGHTON COLLEGE  
 BRITISH LEGION, ISLINGTON NORTH & WEST  
 BRITISH LEGION (ROYAL) ISLINGTON NORTH & WEST  
 BRITISH LEGION, YPRES BRANCH (STANDARD)  
 BRITISH LEGION, ROYAL, LLOYDS BANK (CITY) BRANCH  
 BRITISH LEGION, (ROYAL) CORSTORPHINE  
 BRITISH LEGION, (ROYAL) KIDSGROVE TALKE & DIST  
 BRITISH LEGION, (ROYAL) RADCLIFFE ON TRENT  
 BROMSGROVE SCHOOL  
 BROOKWOOD LAST POST COMMITTEE  
 BUCKINGHAM BATTALIONS IN THE SALIET  
 BUFFS, THE  
 BURY GRAMMAR SCHOOL  
 BEAUMONT HOUSE

FML  
 S5  
 RW2  
 MBC TABLE  
 1WNL  
 RW2  
 PMD  
 CWL2  
 S4  
 S1  
 2WRNBUTT  
 2WNL  
 2WRBUTTR  
 AWin  
 3WNR  
 BW  
 BW  
 BW  
 BW  
 N3  
 BW  
 S13  
 3WNL  
 BW  
 PMD  
 AWR  
 1WNR  
 2WNR

4

BABBINGTON RALPH	S11
BABLAKE SCHOOL	1WNL
BAIRNSFATHER BRUCE, Cpt.	BAPR
BAILEY FAMILY MEMORIAL	BAPR
BAILLIE Maj GEORGE	PLFR
BALDWIN, Pte LEONARD M	PLFR
BARTLETT, E J, Spr 24809	PMDL
BARTLETT, F A, Bdr 140427	PMDL
BATES GEORGE	BAPR
BATTEN Cpt, JOHN HENRY STRODE	S3
BAYNES, Cpt, DENMAN, L H. MM	BW8
BEATTY, Fus CHARLES E	PLFR
BEDWELL, Cpl, GEORGE CHRISTOPHER, DCM.	N13
BEECROFT, Pte, GEORGE W	S10
BELLFIELD, E Cpt	PMDL
BELL, Sgt, W H, MM.	PLFL
BETTS, HENRY LEE	S8
BICKERSTAFFE, Pte, EVERARD MOORE	PLFR
BIRRELL WILLIAM DAVID, A/Bdr	BAPR
BLANCH, Sgt, A.E.	PLFR
BLYTHE, Sgt, COLIN	PLRR
BOLTON, Cpl, W	N7
BORNS, Tpr, FRANK FAIRFIELD	S11
BOWEN C/BOWEN L F/BOWEN L/Cpl WILLIAM J	S4
BOWEN Rfn OLIVER	PLRR
BOWLBY, Cpt, GEOFFRY VAUX	S12
BOYCE, Cpt, ANTHONY COMBE	BAPWR
BRADFIELD, WALTER (BRAD)	N12
BRADSHAW, Pte, W T	S4
BRETLAND, EDWARD, Pte. 30988	BAPL
BRIGGS, Maj Gen, RAYMOND, CB, DSO	WMD
BRITAIN, Lt, JOHN ATHRON	N13
BRITAIN, Lt, JOHN ATHRON	N13
BROADBELT, Lt, A D	S3
BROADBELT, Lt, G	N9
BROOKS, JOHN WILLIAM, Sgt, DCM, MM.	BAPL
BROWNE, 2 <sup>ND</sup> Lt, CHARLES NICHOLAS FOSTER	BW6
BROWNRIGG. LT, JOHN H	N13
BROXUP, THOMAS WATSON	N11
BRYAN, Maj, C C, DSO.	S10
BUCKINGHAM, Lt, I N	S5
BURNETT, CpL, E F D	S10
BURNS, SgT, COLIN	PLRR
BURNELL, G. BURNELL E J, BURNELL W R.	BAPR

5

CLIFTONIAN'S, OLD	FMR
CARABINIERS (6 <sup>TH</sup> DRAGOONS)	
CAMERONIANS	
CAMBRIDGESHIRE REGIMENT	BW1
CAMBUSLANG 1 <sup>ST</sup> BROWNIE PACK	N5
CAMBUSLANG 1 <sup>ST</sup> GIRL GUIDES	N5
CAMBUSLANG 2 <sup>ND</sup> BROWNIE PACK	N5
CAMBUSLANG 2 <sup>ND</sup> GIRL GUIDES	N5
CAMBUSLANG 3 <sup>RD</sup> BROWNIE PACK	N5
CAMBUSLANG 3 <sup>RD</sup> GIRL GUIDES	N5
CAMERON HIGHLANDERS, QUEENS OWN	BW6
CAMERONIANS, THE (SCOTTISH RIFLES)	BAPTISTRY
CANADIAN CORPS ROLL OF HONOUR	BAPTISTRY

CANADIAN EXPEDITION FORCE, 7 <sup>TH</sup> BTTN. (1 <sup>ST</sup> B.C. BTTN)	RWL
CANADIAN INFANTRY CORPS 19 <sup>TH</sup> C.E.F.	2WNL PLA.
CANADIAN MACHINE GUN CORPS	BAPTISTRY
CANADIAN MEMORIAL (VETERANS OF CANADA)	BFM
C.E.F. 16 <sup>TH</sup> BTTN, (CANADIAN SCOTTISH)	BAPTISTRY
C.E.F. 15 <sup>TH</sup> BTTN, (48 <sup>TH</sup> HIGHLANDERS)	BAPTISTRY
CAVALRY FIELD AMBULANCE, 6 <sup>TH</sup>	S11
CHARTERHOUSE SCHOOL	2WNR
CHELTENHAM COLLEGE	WBUTT R
CHESHIRE REGIMENT, 1 <sup>ST</sup> 5 <sup>TH</sup> AND 6 <sup>TH</sup> BTTN'S	1WNL. PLA
CHESHIRE REGIMENT 22 <sup>ND</sup> BTTN	CWR3
CLAYESMORE SCHOOL	3WBUTT R
CHORLEY & DISTRICT	HPMD
CHRIST'S HOSPITAL SCHOOL	1WNR
CINQ PORTS, 5 <sup>TH</sup> ROYAL SUSSEX REGT	LMD1
CITY OF LONDON REGIMENT,(POST OFFICE RIFLES)	N14
CITY OF LONDON REGIMENT,2 <sup>ND</sup> Bttn, ROYAL FUSILIERS	CWL3
CITY OF LONDON RIFLES	BANNER & 2 <sup>ND</sup> BUT L
COLDSTREAM GUARDS	AW
COLDSTREAM GUARDS	BW3
COLFES	3WNL
CONNAUGHT RANGERS	3WNR
CORNWALL'S, DUKE OF, LIGHT INFANTRY	LMD1
CRANLEIGH SCHOOL	

6

CAIRD DAVID M	S11
CALLEAR Cpt, HERBERT	BW4
CALVERLEY, PHILIP HENRY, PtE.	BAPR
CAMERON J, L/Cpl	PMDL
CARR, Pte ALBERT VICTOR	PMDR
CARRICK, Lt JOHN	N9
CARTWRIGHT ALEXANDER J	N9
CARTWRIGHT, Cpt DONALD	N8
CARTWRIGHT KENNETH S	N10
CHADWICK, Pte W	N4
CHALONER, Sgt E P	PLRL
CHAMIER, CYRIL KINNAIRD, Lt.	BAPL
CHAMPION, R J, Lt	PMDL
CHARLES, HRH PRINCE OF WALES	BELL 5
CHAVASSE, Cpt, NOEL GEODFREY, VC and BAR, MC	BAPTISTRY
CHINESE LABOUR CORPS	PMDL
CHURCHILL, SIR WINSTON, KG	RW5
CLAMP, Gnr CYRIL	PLRL
CLARK, Cpl ARTHUR	PLFR
CLARK, Lt JOHN WILLIAM TOWERS	S5
CLOUGH, 2 <sup>ND</sup> Lt E R B	N6
COLLICK, RICHARD (Dick) MBE	CSR
COMPER, Gdsn CYRIL WILLIAM	S1
COOK, Rfn, THOMAS WATSON	S13
COOMBS, Maj NEWTON LEWIS	BOOKCASE @ ORGAN
COOMBS ROSE E, MBE	PORTABLE LECTERN
COOPER, Pte S. MM	S9
COTTRELL, Sap, S E	PLRL
COUSINS, Rev A E	UNION FLAG DISPLAY CABINET
CROCKFORD, Pte C A	N12
CROOK, Pte, A L	N14

7

DAUNTYSEY'S SCHOOL	1WNL
D.C.L.I. 1 <sup>ST</sup> BTTN	PLAQUE 1WNL
DEAN CLOSE SCHOOL	1WNL
DEVONSHIRE REGT, 1 <sup>ST</sup> BTTN	PLAQUE 1WNL
DEVONSHIRE REGT.	BAPR
DIVISION, 23 <sup>RD</sup>	GREAT CROSS & PLAQUE
DIVISION 41 <sup>ST</sup> , OBSERVATION SECTION	PLAQUE 2WNL
DIVISION, 5 <sup>TH</sup>	
DORSETSHIRE REGT.	PLFR
DORSETSHIER REGT.	BAPR
DURHAM LIGHT INFANTRY	BW2
DURHAM LIGHT INFANTRY	PLRL
DURHAM LIGHT INFANTRY	PLRL
DRAGOON GUARDS, 3 <sup>RD</sup>	
DRAGOON GUARDS, ROYAL SCOTS GREYS	BAP

8

DALZIEL, THOMAS ROBERTSON.	PLRR
DARLING, Pte D W.	S4
DAWES, A	EMBROIDERED PANEL
DAWES, FAMILY.	IN
DAWES, S	BAPTISTRY
DAWKINS, A G	S12
DAWKINS, W V.	N12
DAWSON, LEONARD WILLIAM.	WMD
DAWSON, LEONARD WILLIAM	BOOKCASE
DEACON, W A.	S7
DEAN, Col, DONALD J, VC, OBE, TD, DL.	WMD
DESPART, Cpt, C BEAUCLERK, DSO, MC	S2
DEVANEY, Pte, P	PLRR
DIANA, PRINCESS OF WALES	BELL 1
DICKINSON, 2 <sup>ND</sup> Lt, LEWIS GEORGE	OAK LECTERN
DICKINSON, Cpt, RONALD F B.	BW3
DICKSON, Msmn, DAVID ANGUS.	N13
DICKSON, ROBERT, Rfn. 10/14369	BAPR
DICKSON, Pte, NORMAN ALVIN	PLAQUE 3WNL
DOGGETT, CHARLES	PMDR
DOGGETT, SgT, WILLIAM HARRIS.	PMDR
DOWNTOWN, Pte, g	S5
DOWTEN, Pte, P	PMD
DUFF, Pte WILLIAM.	PLRR
DUKE OF WELLINGTONS (WEST RIDING) REGT.	CWR1
DUKE OF WELLINGTON'S REGT, 2 <sup>ND</sup> BTTN.	1WNL
DUNN, WILLIAM (BILLY) MBE	PLAQUE 1WNL
DUNSTABLE GRAMMAR SCHOOL	3WNL
DURANT, NOEL H F C.	THE ORGAN

9

EASTBOURNE COLLEGE	2WNL
EAST SURREY REGT.	CWL2
EAST SURREY REGT, 1 <sup>ST</sup> BTTN.	PLAQUE 1WNL
EAST YORKSHIRE REGT.	CWL1
ELSMERE COLLEGE	WBUTTR
ELSTONIAN ASSOCIATION (OLD BOY'S, ELSTON SCHOOL, BEDFORD)	N10
EPSOM COLLEGE	RW8

EPSOM COLLEGE	1WNR
ERMYSTED'S GRAMMAR SCHOOL	1WNL
ESSEX YEOMANRY	BAPTISTRY
ESSEX REGIMENT	BAPTISTRY
ETON COLLEGE: FOUNDATION STONE AND IN PORCH OF CHURCH HALL	

10

EDMANSON, Lt, JOE	N10
EDWARDS, Sgt, A C, DCM.	PMD
ELMS, Cpl, THOMAS.	PLRR
EVANS, ALBERT SYDNEY	PLFL
EVANS, Pte, H H.	PLFL
EVANS, ELLIS HUMPHREY (HEDD WYN) SLATE CANDLE HOLDER	BAP

11

FETTES COLLEGE	1WNR
FINSBURY RIFLES, 2 <sup>ND</sup> BTTN.	S12
FIRST AID NURSING YEOMANRY (F.A.N.Y.)	RW4
FOREST SCHOOL	3WNR
FRIENDS OF ST GEORGES CHURCH, YPRES	
THE MEMBERS OF THE 1999 PILGIMAGE PRESENTED THE CHURCH WITH THE NEW CHOIR-STALL HAS SOCKS	
THE FRIENDS OF ST GEIORGES CHURCH, YPRES	
ON THE OCCASION OF THEIR 50 <sup>TH</sup> ANNIVERSARY PRESENT THE PRIESTS CHAIR TO THE RIGHT OF THE ALTER.	

12

FRENCH, FIELD MARSHAL JOHN DENTON PINKTON, 1<sup>ST</sup> EARL of YPRES,  
 VICOUNT FRENCH of YPRES  
 MEMORIAL ON RIGHT WALL, PULPITS, CHOIR STALLS, BAPTISMAL FONT: HIS MEDAL RIBBONS ARE IN THE DISPLAY CABINET.

\*\*\*\*\*

FARMER, REUBEN ARTHUR, Pte. 23817	BAPR
FALLOW, L/Cpl JAMES F	PLRL
FALLOWS, F A, Pte S/10765	PMDL
FARRINGTON, Tpr, CHARLES E.	PLRL
FAULKNER, ANGUS & HENRIETTA.	CREDENCE TABLE
FREGUSON, Cpl, P HOWARD	WMD
FIRTH, FRED.	N4
FLETCHER, Pte, W C	S13
FLETCHER, Sgt, EDWARD	S10
FLOWER CHARLES, Rfn. 642656	BAPR
FOUCAR, Col, E C V, MC.	PMD
FOUCAR, Maj, J L	PMD
FOUCAR, Rfn, C A.	PMD
FOX, Sgt, JOSEPH	N13

13

GLOUCESTERSHIRE REGT.	LMD3
-----------------------	------



GLOUCESTERSHIRE REGT. 12 <sup>TH</sup> BTTN	PLAQUE 1WNL
GORDON HIGHLANDERS.	BW3
GORDON HIGHLANDERS, 12 <sup>TH</sup> BTTN	PLFL
GREEN HOWARDS.	CWL2
GRENADIER GUARDS.	1W
GRENADIER GUARDS.	LMD3
GRESHAM SCHOOL	1WNR
GUARDS DIVISION.	AW
GUARDS MACHINE GUN REGIMENT.	AW
GUILFORD GRAMMAR SCHOOL, PERTH WESTERN AUSTRALIA	1WNL

14

GABBETT-FAIRFAX, 2 <sup>ND</sup> Lt, T O.	PLRL
GARSDIE, Sgt, GEORGE GILBERT.	PLFL
GARTON, CHARLES W.	PLFR
GARTON, Sgt, DAVID CHARLES.	S10
GEORGE V, HM KING.	BIBLE IN SACRAMENT CHAPEL
GILCHRIST, FRANK ISMAY.	N3
GILES, Rfm, GEORGE.	SPECIAL PLAQUE CHOIR VESTRY
GLENALMOND COLLEGE	2WNR
GLENN, Cpt, REG.	PMD
GODDEN, HARRY F.	BAPL
GORLDSBOROUGH, GEORGE WILLIAM.	PMDR
GRADY, W J. Pte 202870	PMDL
GREEN, Cpt, H R TOWNSHEND	N9
GREEN, Dvr, JOSEPH.	BW3
GREENWOOD, CSM, T W, DCM, MM.	PLFL
GREENSIDES, J E, Pte 14496	PMDL
GRENFELL, Cpt, FRANCIS O, VC.	CVW
GRENFELL, Cpt, RIVERSDALE.	CVW
GROARK, Pte, HENRY	PMDL
GROARK, Pte, JAMES	PMDL
GROARK,, Pte, MICHAEL	PMDL
GROVES, Pte, S	N8
GRUNDY, GEOFFERY STEWART	N11

15

HAILEYBURY COLLEGE.	RW7
HAMPSHIRE REGT.	LMD1
HAUGHTON GEORGE	BAPL
HAYES CRICKET CLUB	3WNR
HARROW SCHOOL	1WNL
HEREFORD CATHEDRAL SCHOOL	3WNR
HERTFORDSHIRE REGT.	BW4
HIGHLAND LIGHT INFANTRY.	LMD3
HONOURABLE ARTILLERY COMPANY.	BW4
HONOURABLE ARTILLERY COMPANY.	S11
HOUSEHOLD BRIGADE.	AW
HOUSEHOLD CAVALRY SQDN,	Plaque on inner main door & Standard
HUSSARS, 11 <sup>TH</sup> (PRINCE ALBERTS OWN)	CWL3
HUSSARS, 18 <sup>TH</sup> .	RW4
HUSSARS, 19 <sup>TH</sup> .	PLAQUE 1WNL

HAIG, FIELD MARSHAL, SIR DOUGLAS, KT, GCB, OM, GCVO, KCIE.  
1<sup>ST</sup> EARL HAIG of BREMERSIDE.

PLAQUES: 3WNL & RW6  
BANNER: 2WNL

\*\*\*\*\*

HAWKES, RITA	RW7
HAWKES, GEORGE	BAPL
HARDING, Pte, CHARLES.	PMDR
HARDMAN, 2 <sup>ND</sup> Lt, FREDERICK McMAHON.	BAP. WC
HARDY, Rfn, ERNEST.	PLRL
HARRY, HRH, THE PRINCE.	BELL 4
HART, MAURICE, Lt.	BAPR
HAYCOCK, Pte, P E.	S3
HAYES, L/Cpl, JOHN JAMES (JACK) MM.	PLRR
HAYES, ARCHIE, Sgt.	BAPR
HAYWARD, L/Cpl, B T.	N4
HEDD WYN, WELSH POET see EVANS, E H.	
HELLIWELL, T H, Tpr 2922	PMDL
HENDERSON, Sgt, MARSHAL.	S7
HICKS, Pte, FREDERICK JAMES.	PLFR
HIGGINS, J R, Tpr	PMDL
HIGGINS, WIFRED, Pte. 3/1741	BAPR
HILL, CSM, W G.	N12
HODGE, D A	PMDL
HOGG, Maj, SAMUEL R, DSO, MC, FCA.	WMD
HOLDER LEONARD GEORGE, Pte.	BAPR
HOLLAND, Shoeing Smith, H.	PLRR
HOPCROFT, F CAMPBELL.	N14
HOSKINS, Pte, HERBERT.	PLFR
HOWE, Pte, ALBERT E G 8980.	PMDR
HOYLE, L/Sgt, EDGAR.	PLFL
HOYLE, Pte, WILFRED.	PLFL
HUBBARD, Cpl, JOHN THOMAS.	PLRR
HUBBLE, Sgt, FREDERICK A, MM & BAR.	PLRR
HUDSON, Dvr, THOMAS FREDERICK.	PLFL
HUDSON, Pte, F R.	PMDR
HUDSON, Pte, J T	PMDR
HULEATT, Maj, FRANCIS	S9
HUTCHINS, Gnr, S W A.	N3
HUTCHINSON, Pte, GEORGE J.	S2

IEPER, THE TOWN OF.	BELL 6
IMPERIAL PATRIOTS.	SANCTUARY LAMP
IRISH GUARDS.	AW
ROYAL INSKILLING FUSILIERS.	BW1
ROYAL IRISH FUSILIERS. (PRINCESS VICTORIA'S).	LMD2
ROYAL IRISH RIFLES.	SW3

INGPEN, Lt, E L.	S13
INGPEN, Lt Col, P L, DSO.	N13

20

JACKSON C B/JACKSON T.	EMBROIDERED TAPESTRY PANEL IN BAPTISTRY
JEFFERIES, Cpt, C L.	N2
JENKINS, Lt, G C.	N1
JOHNSON, L/Cpl, F.	N11
JONES, Pte, HENRY	PMD
JONES, PtE, JAMES.	PMD
JONES, Cpt, LOFTUS E P.	ORW&BUT
JONES, Cpt, T LLEWELLYN.	BW8
JONES, THOMAS LUKE, MC.	CRUSIFER
JONES, Pte HENRY/JONES, Sgt DAVID E.	PLFL
JUDGE, Rfn, J W E.	PLFR

21

KILBURN GRAMMAR SCHOOL	2WINBUTTRIGHT
KIMBOLTON SCHOOL	1WNL
KING EDWARDS SCHOOL BIRMINGHAM	W2NLBUT
KING'S SCHOOL (MACCLESFIELD)	2WINBUTTRIGHT
KING'S SCHOOL WORCESTER	2WINBUTTRIGHT
KING'S OWN HUSSARS, 3 <sup>RD</sup> .	RW2
KING'S OWN SCOTTISH BORDERERS.	CWL2
KING'S OWN SCOTTISH BORDERERS, 2 <sup>ND</sup> BTTN.	PLAQUE 1WNL
KING'S QON YOURKSHIRE LIGHT INFANTRY	RW3
KING'S OWN YORKSHIRE LIGHT INFANTRY, 1 <sup>ST</sup> /4 <sup>TH</sup> BTTN.	RW3
KING'S OWN YORKSHIRE LIGHT INFANTRY, 2 <sup>ND</sup> BTTN.	PLAQUE 1WNL
KING'S REGIMENT, 6 <sup>TH</sup> (LIVERPOOL)	PLAQUE 1WNL
KING'S ROYAL RIFLE CORPS.	BW4
KINGS SCHOOL, GLOUSESTER	3WNL
KINGS SCHOOL, PETERBOROUGH	1WNR
KINGS SCHOOL CHESTER	W2NLBUT
KINGSWOOD SCHOOL	3WNLR

22

KEATLY CUTHBERT	BAPL
KEATLY JACK	BAPL
KENNEDY, Lt, T C.	N12
KENSHOLE, 2 <sup>ND</sup> Lt, T R, DSO.	PLRL
KENT, L/Cpl, R W (also on the Menin Gate).	PLRL
KENYON, A Pte 62469	PMDL
KERR, Cpt, SYLVESTER CECIL RAIT.	PLRL
KERR, Cpt, WILLIAM CHARLES RAIT, DSO.	PLRL
KERSHAW, PATRICK SAGAR.	MEMORIAL BOOK CABINET
KIDD, 2 <sup>ND</sup> Lt, H D.	V
KING, H E, Pte 17843	PMDL
KNAPP-FISHER, Lt, CYRIL I E H.	PORCH
KNOTT, Cpt, HENRY BASIL	BELLS
KNOTT, Maj, JAMES LEADBITTER, DSO.	BELL TOWER
KNOTT, SIR JAMES	PHOTO/PORCH
KNOTT, SIR JAMES	BELL 8

LANCASHIER FUSILIERS, 7 BATTALIONS OF	PLAQUE-3WNL
LANCERS, 9 <sup>TH</sup> QUEEN'S ROYAL	SACRISTY WINDOW
LANCERS, 16 <sup>TH</sup> .	S1
LANCERS, X11, ROYAL	S8
LEEDS GRAMMAR SCHOOL	1 <sup>ST</sup> WINBUTTL
LEICESTERSHIRE REGT.	2WNR
LEICESTERSHIRE (PRINCE ALBERT'S OWN) YEOMANRY	BAPTISTRY
LEINSTER REGT, PRINCE OF WALES.	BW6
LENZIE ACADEMY.	2WNL
LIFE GUARDS, 1 <sup>ST</sup> .	AW
LIFE GUARDS, 1 <sup>ST</sup> & 2 <sup>ND</sup> REGT.	CWR3
LIFE GUARDS, 2 <sup>ND</sup> .	AW
LINCOLNSHIRE REGT.	CWR2
LIVERPOOL REGT, KINGS.	BW6
LIVERPOOL REGT, KINGS "THE LIVERPOOL PALS"	BW8
LIVERPOOL SCOTTISH.	BW7
LONDON REGT, 1 <sup>ST</sup> SURREY RIFLES.	LMD1
LONDON REGT, 7 <sup>TH</sup> (CITY OF LONDON BTTN)	BANNER, 1 <sup>ST</sup> BUTT. LEFT
LONDON REGT, 12 <sup>TH</sup> BTTN.	LMD1
LONDON REGT, 19 <sup>TH</sup> BTTN,	RW1
LONDON REGT, 20 <sup>TH</sup> Bttn.	BAPTISTRY
LONDON RIFLE BRIGADE	BW2
LONDON SCOTTISH.	CWL2
LORETTO SCHOOL.	RW7
LOUGHBOROUGH GRAMMAR SCHOOL	1WNL
LOYAL NORTH LANCS REGT.	WMD

LAMB, A, Pte 20792	PMDL
LACEY, CPL EDWARD	BAPL
LAVERY, Pte, J S.	N10
LEACH, RICHARD, Pte. 68854	BAPR
LIEBERT, Maj, BERNARD ROBERT	CSL
LITTLEWOOD, Pte, W O.	N1
LLOYD, Lt, E A C.	N12
LYALL, J L/Cpl 15749	PMDL
LYNAS, CHARLES RUSSON.	N14
LYON, Cpt, CHARES JAMES.	N2
LYON, Lt, ALEXANDER PATRICK.	N3
LYON, Lt WALTER SCOTT.	N9
LYONS, A/Cpl, MAURICE.	PLRR

### THE (YPRES) MENIN GATE MEMORIAL

DESIGNED BY SIR EGINALD BLOOMFIELD AND UNVEILED IN 1927 BY HIS MAJESTY KING GEORGE V, IN THE PRESENCE OF HER MAJESTY QUEEN MARY AND HIS HIGHNESS THE PRINCE OF WALES (LATER KING EDWARD V111 & DUKE OF WINDSOR). IT HAS ON ITS

WALLS ENGRAVED THE NAMES OF 54,984 COMMONWEALTH AND EMPIRE SOLDIERS OF THE GREAT WAR WHO HAVE NO KNOWN GRAVE.

SOLDIERS OF THE GREAT WAR “KNOWN UNTO GOD”

MACHINE GUN CORPS	1WNL
MACHINE GUN CORPS	BAPTISTRY
MALVERN COLLEGE	1WNRL
MANCHESTER REGT.	CWR3
MANCHESTER REGT.	1WNL
MARLBOROUGH COLLEGE	FML
MERCERS SCHOOL	1WMLBUT
MERCHANT TAYLOR’S SCHOOL	3WNL
MERCHANT TAYLOR’S SCHOOL O.T.C.	S7
MIDDLESEX REGT.	AWL
MIDDLESEX REGT.	V
MILITARY POLICE, FOOT & MOUNTED.	BW6
MILITARY POLICE.	1WNL
MISSION TO SEAMEN, GHENT.	LECTERN, SACRISTY CHAPEL
MONMOUTHSHIRE REGT, 3 <sup>RD</sup> BTTN.	BAPTISTRY
MONMOUTHSHIRE REGT, T.A.	3WNR
ROYAL MARINE ARTILLERY	BW7
ROYAL MARINE LIGHT INFANTRY	BW7
ROYAL MUNSTER REGT.	LMD3

28

MacINTOSH, DOUGLAS F.	N4
MacLEOD, Pte, JOHN	N7
MAHONEY, Pte, EDWARD)	PLRR
MAHONEY, Rfn, THOMAS) BROTHERS	PLRR
MARKHAM, Lt, M W.	S3
MARRIOT, Cpt, ARTHUR PELAM	PLFR
MARSHALL, Pte, ARCHIBALD W G.	WMD
MARTIN, L/Cpl, HENRY J.	PLRL
MARTIN, PATRICK, Pte. 1591	BAPR
MAURET-COLLICK, JOAN, BEM.	BAPR
MAXWELL, 2 <sup>ND</sup> Lt, HARLEY HISLOP.	S12
McBRIDE, J M.	PMDL
McLURE, Maj, C R.	N8
McLURE, Rfn, GEORGE	PMDR
McCRAE, Lt Col, JOHN (IN FLNDERS FIELD POEM)	BAPTISTRY
McMAHON Lt Col, NORMAN REGINALD, DSO.	CW BAPT.
McMANUS, Pte, H J.	ORGAN BLOWER
MEGAW, Cpt, WILLIAM CECIL KENNEDY, MC.	BW1
MELLOR, WILLIAM, Pte, 7759	BAPR
MERTON COURT	3WNLL
MILLAR, Sgt, JOHN	3WNL
MILSON, S Lt	PMDL
MOLE, EDGAR (GUS)	PLFR
MONTGOMERY, FIELD MARSHAL BERNARD, VICOUNT OF ALAMEIN, KG,GCB, DSO, RW6	
MOTHER TERESA OF CALCUTTA.	BELL 2
MOORE, EDGAR NOEL, MC	S8
MOORE, EDGAR NOEL,	S8
MORAN, Pte, S G W.	PMDR
MORGAN, Sgt, ALBERT RUMSEY, DCM.	N9
MORRIS, Rfn, P.	PLFL
MUDD, Pte, JOHN	PLRL

MUIR, Maj, JOHN H	S3
MURRAY, L/Cpl, LEWIS	N11
MUSGRAVE, HERBERT W D.	N8
MUSGRAVE, JENNIE LUCINDA.- A DAUGHTER.	N8
MUSGRAVE, Maj, HERBERT, DSS.	S5

29

NEW ZEALAND, COMMONWEALTH OF	FLAG
NEW ZEALAND MEMORIAL, (N.Z. RETURNED FORCES ASS)	WMD
NORFOLK REGT, 1 <sup>ST</sup> BTTN.	1WNL
NORTH IRISH HORSE.	1WNL
NORTHAMPTONSHIRE YEOMANRY.	1WNL
NORTHUMBERLAND FUSILIERS, 5 <sup>TH</sup> BTTN.	BW4
NOTTINGHAM HIGH SCHOOL	2WNLBUTT
NURSES-ALL OF G.B., DOMINIONS & U.S.A.	BW1

30

NASH, MISS CONSTANCE KATHLEEN.	S9
NATTRISS A/NATTRISS J W. EMBROIDERED PANEL IN BAPTISTRY	
NICHOLS, Pte, HAROLD JOHN GRAHAM.	S4
NIXON, W H, Pte 25828	PMDL
NORTON, 2 <sup>ND</sup> Lt, TOM EDWARD GRANTLEY.	BW7

31

OLD CONTEMPTABLES ASS, LEEDS & DISTRICT BRANCH	N4
OLD CONTEMPTABLES ASS, ROMFORD BRANCH	PLFR
OLD CONTEMPTABLES ASS, SLOUGH BRANCH. (STANDARD)	BW
OLD CRANLEIGHANS	2WNR
OLD ELLESMERIANS	1WNRBUTT
OLD TAUNTONIANS	1WNL
OUNDLE AND LAXTON SCHOOLS	W1NLBUT
OXFORDSHIRE & BUCKINGHAMSHIRE REGT, 2 <sup>ND</sup> BTTN.	2WNR
2 <sup>ND</sup> BTTN (52 <sup>ND</sup> LIGHT INFANTRY) 1/4 <sup>TH</sup> & 2 <sup>ND</sup> /4 <sup>TH</sup> . 1 <sup>ST</sup> &2 <sup>ND</sup> BUCKS, 5 <sup>TH</sup> & 6 <sup>TH</sup> OXFORD.	

32

OAKES, Lt, GERARD EDMUND ROSENGRAVE.	BW2
ODONEL, Cpt, F THOMAS, MC.	BAP, WL
OFFREY, Pte, JOHN ANTHONY.	BW7
OLIVER, FATHER GRAHAM.	BELL 7
OWEN, W R, Sgt S/4051	PMDL

33

PARIMETERS SCHOOL	1WNR
POST OFFICE RIFLES, 8 <sup>TH</sup> CITY OF LONDON REGT.	2WNR
PRINCESS PATRICIA'S CANADIAN LIGHT INFANTRY.	3WNR

PRISONERS OF WAR.

THE NATIONAL EX-PRISONERS OF WAR ASSOCIATION.	RW6
---	-----

**PLUMER, Field Marshal, HERBERT CHARLES ONSLOW, GCB, GCMG, GCVO, CBE. 1<sup>ST</sup> Viscount of Messines and of Bilton.**

**FLOOR PLAQUE IN CHANCEL, ALTER CROSS AND CANDELABRA**

\*\*\*\*\*

<b>PALLET, L/Sgt, E R.</b>	<b>N7</b>
<b>PALMER, 2<sup>ND</sup> Lt, W L.</b>	<b>ARCHIVES CABINET</b>
<b>PALMER, 2<sup>ND</sup> Lt, W L.</b>	<b>S13</b>
<b>PALMER, Rfn, G F.</b>	<b>PLRL</b>
<b>PARKE, Cpt, CHARLES G A.</b>	<b>PLRR</b>
<b>PARKER, EDWARD HENRY, S/5204</b>	<b>BAPR</b>
<b>PARTING, B, L/Sgt, MM</b>	
<b>PARRY-MORRIS, PtE, W, MM.</b>	<b>PLRL</b>
<b>PATTON, Pte, EDWIN MILLIKEN.</b>	<b>PLRL</b>
<b>PATULLO, Lt, HUGH C de B.</b>	<b>PMDR</b>
<b>PEARL, PtE, WILLIAM.</b>	<b>BAPTISTRY</b>
<b>PETTIT, L/Cpl, TOM.</b>	<b>WMD</b>
<b>PINHEY, K F G.</b>	<b>S4</b>
<b>PIRTON HERTFORDSHIRE.</b>	<b>BAPL</b>
<b>PLATT, Lt, JOHN ROOKHURST.</b>	<b>PLAQUE CHANCEL FLOOR</b>
<b>PLAYFAIR, Cpt, The Hon, LYON.</b>	<b>BW1</b>
<b>POCKLINGTON H C, and wife ANN.</b>	<b>S7</b>
<b>POMA, R, CSM 6376</b>	<b>PMDL</b>
<b>POOLE, Lt Col, FRANCIS GARDEN.</b>	<b>CSR</b>
<b>PORTER, Lt, AUBREY BLACKWOOD.</b>	<b>S9</b>
<b>PORTER, Pte, WALTER C.</b>	<b>PLFL</b>
<b>POTTING, Rfn, S J.</b>	<b>PLFL</b>
<b>POWLEY, HERBERT J/POWLEY WILLIAM J</b>	<b>BAPR</b>
<b>POWNALL, Lt, L H Y.</b>	<b>S1</b>
<b>PRANGLEY, C D, 2<sup>ND</sup> Lt</b>	<b>PMDL</b>
<b>PRITER, W S.</b>	<b>S11</b>

<b>QUEEN ELIZABETH HOSPITAL, BRISTOL</b>	<b>2WNL</b>
<b>QUEEN ELIZABETH'S GRAMMAR SCHOOL, HORNCastle</b>	<b>2WNR</b>
<b>QUEEN MARY'S GRAMMAR SCHOOL, WALSALL</b>	<b>1WNR</b>
<b>QUEEN VICTORIA'S RIFLES.</b>	<b>CWR2</b>
<b>QUEEN VICTORIA'S RIFLES, 1<sup>ST</sup> BTTN.</b>	<b>1WNL</b>
<b>QUEEN'S OWN HUSSARS, 4<sup>TH</sup>.</b>	<b>BW4</b>
<b>QUEEN'S OWN RIFLES, 1<sup>ST</sup> WEST KENT REGT.</b>	<b>1WNL</b>
<b>QUEEN'S ROYAL REGT, OLD COMRADES ASS.</b>	<b>S9</b>
<b>QUEEN'S ROYAL REGT, 11<sup>TH</sup> (LAMBETH) BTTN.</b>	<b>BANNER &amp; PLAQUE, 2WNR</b>
<b>QUEEN'S WESTMINSTER RIFLES.</b>	<b>BANNER 2BNR</b>
<b>QUEEN'S WESTMINSTER RIFLES.</b>	<b>SIX CHAIRS NUMBERED S6</b>

<b>RAILWAY POLICE FORCES, GB.</b>	<b>3WNL</b>
<b>REED'S SCHOOL</b>	<b>1STWINBUTTL</b>
<b>REGIMENT, 64<sup>TH</sup>, PRINCE OF WALES.</b>	<b>CWR1</b>
<b>REPTON SCHOOL, DERBYSHIRE</b>	<b>2WNR</b>

RIFLE BRIGADE.		BW4
ROSSALL (OLD ROSSILIANS)		1WNL
ROYAL AIR FORCE.		STANDARD
ROYAL ARMY MEDICAL CORPS.		1WNL
ROYAL ARMY MEDICAL CORPS, CANADA.		1WNL
ROYAL ARMY ORDNANCE CORPS.		1WNL
ROYAL ARMY SERVICE CORPS.		CWR2
ROYAL ARMY SERVICE CORPS.		1WNL
ROYAL ARMY VETERINARY CORPS.		1WNL
ROYAL ARMY VETERINARY CORPS		RW4
ROYAL ARTILLERY.		AW
ROYAL ARTILLERY.		1WNL
ROYAL ARTILLERY CHAPLAIN'S DEPT, 5 <sup>TH</sup> CYCLE CO.		1WNL
ROYAL COAT OF ARMS		AW
ROYAL ENGINEERS.		AW
ROYAL ENGINEERS, CORPS OF.	COMMUNION SREVICE	
ROYAL FUSILIERS.		AWR
ROYAL FLYING CORPS & DOMINION AIR SERVICES .	WINDOW-3WNL	
ROYAL FUSILIERS, 26 <sup>TH</sup> (BANKERS) BTTN.	3 CHAIRS, N10	
ROYAL HORSE GUARDS.		AW
ROYAL HORSE GUARDS, THE BLUES		CWR1
ROYAL HUSSARS, 10 <sup>TH</sup> .		CWL1
ROYAL INNISKILLING FUSILIERS (LATE 27 <sup>TH</sup> INNISKILLINGS)		N11
ROYAL NAVAL DIVISION		BAPTISTRY
ROYAL REGIMENT OF ARTILLERY		WINDOW-2WNL
ROYAL SCOTS.		CWL1
ROYAL SCOTS, 5 <sup>TH</sup> BTTN.		1WNL
ROYAL SCOTS FUSILIERS.		AWR
ROYAL SUSSEX REGT, 5 <sup>TH</sup> CINQUE PORTS BTTN.		LMD2
ROYAL SUSSEX REGT, 2 <sup>ND</sup> BTTN.		RW1
ROYAL ULSTER (then ROYAL IRISH) RIFLES		RW3
ROYAL WARWICKSHIRE REGT,		AWL
ROYAL WARWICKSHIRE REGT, 14 <sup>TH</sup> , 15 <sup>TH</sup> , 16 <sup>TH</sup> BTTN'S		1WNL
ROYAL WELCH FUSILIERS.		CWL1
ROYAL WELSH REGT.		GREAT WAR BIBLE
ROYAL WEST KENT REGT, QUEEN'S OWN.	BANNER & PLAQUE-3WNR	
RUTHERGLEN, 1 <sup>ST</sup> BROWNIE PACK		S6 RUTHERGLEN, 2 <sup>ND</sup>
BROWNIE PACK.	N1	
RUTHERGLEN, 2 <sup>ND</sup> GIRL GUIDES.		S7
RUTHERGLEN, 3 <sup>RD</sup> BROWNIE PACK.		S2
RUTHERGLEN, 3 <sup>RD</sup> GIRL GUIDES.		N4
RUTHERGLEN, 4 <sup>TH</sup> BROWNIE PACK.		N3
RUTHERGLEN, 5 <sup>TH</sup> GIRL GUIDES.		N1
RUTHERGLEN, GIRL GUIDES		S1
RUTHERGLEN, GIRL GUIDES		S1
RUTHERGLEN, RANGERS.		N1

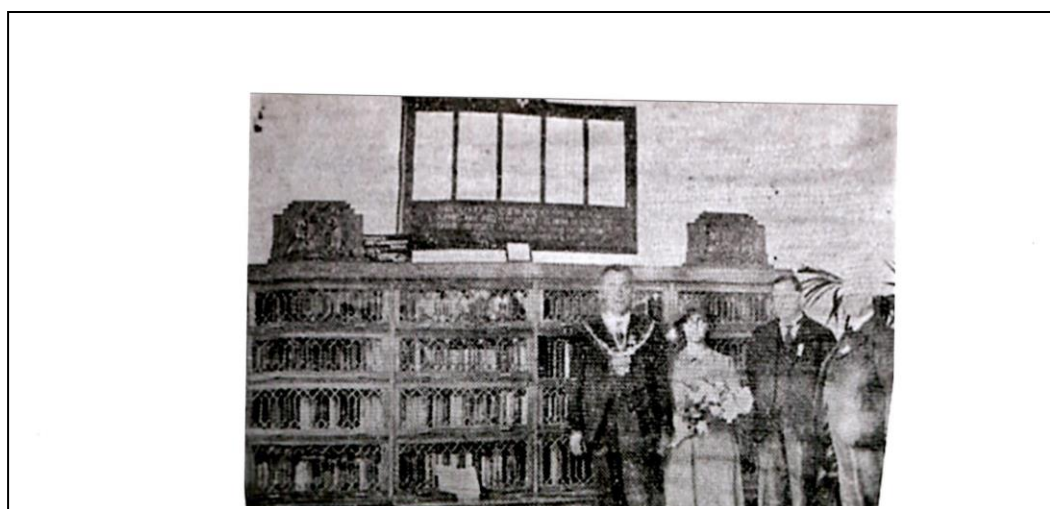
RADCLIFFE, Cpt, MILES.		S3
RASTALL, Pte, REGINALD RICHARD.		PLFR
REID, 2 <sup>ND</sup> Lt, A D.		BW3
RIGBY, FREDERICK		BAPL
RIGBY, Lt, GEORGE, MC, BA (CANTAB)		BW7
RILEY, Lt, CHARLES (CHUCK)		N2
RODGE, Pte, GLYNDWR.	CHAIR, NO NUMBER	
ROOKE, B, MBE.		PMDL
RUSSON, Cpl, JOHN JAMES.		PMD



SCOTS GUARDS.	AW
SCOTS GUARDS, OFFICERS.	CWL3
SCOTS GUARDS, WO's, NCO's OTHER RANKS	CWL3
SEAFORTH HIGHLANDERS.	LMD2
SEAFORTH HIGHLANDERS.	PLFL
SEDBERGH SCHOOL	3WNL
SHEFFIELD WAR GRAVES PILGRIMAGE 1938	CHURCH HALL PORCH
SHERWOOD FORESTERS.	AWL
SHERBORNE SCHOOL	2WINBUTTRIGHT
SHROPSHIRE LIGHT INFANTRY, KINGS "PLAS BTTN"	BW4
SILCOATES SCHOOL	1WNRR
SIR THOMAS RICH'S SCHOOL	2 <sup>ND</sup> WINBUTTL
SOMERSET LIGHT INFANTRY.	RW4
SOMERSET LIGHT INFANTRY. (PRINCE ALBERT'S OWN) BANNER, BUTT, NR, RW4	WMD
SOUTH AFRICAN MEMORIAL.	WINDOW 1WRN
SOUTH IRISH HORSE.	2WNL
SOUTH STAFFORDSHIRE REGT.	
1 <sup>ST</sup> , 2 <sup>ND</sup> , 5 <sup>TH</sup> , 6 <sup>TH</sup> , 7 <sup>TH</sup> , 8 <sup>TH</sup> , 9 <sup>TH</sup> BTTNS.	
SOUTH STAFFORDSHIRE REGIMENT, 9 <sup>TH</sup> BTTN.	PLFL
SOUTH WALES BORDERERS.	S8
SOUTH WALES REGT, (PRINCE OF WALES VOLUNTEERS)	3WNR
SECOND ARMY STAFF	AWR
SUFFOLK RGT, 12 <sup>TH</sup> BTTN	BW8
ST ANDREW'S COLLEGE, GRAHAMSTOWN, SOUTH AFRICA	1WNL
STAMFORD SCHOOL	2WNLBUT
ST ANDREW'S COLLEGE, CANADA	1WNLBUT
ST CLEMENTS DANE	3WNLBUT
ST DUNSTANS COLLEGE	2WNR
ST GEORGES SCHOOL, HARPENDEN	2WNL
ST JOHN'S AMBULANCE	FMR
ST JOHN'S SCHOOL, LEATHERHEAD	2WNL

#### 4<sup>TH</sup> SEPTEMBER 2012.

This is a photograph from the Sheffield War Graves Pilgrimage, July 1938, when the bookcase (part of which is still in the former British School, now the church hall) was presented. Pictured are the Mayor & Lady Mayoress of Sheffield, Mr George Lawrence (the philanthropist who donated the bookcase) and on the far right my grandfather, Mr Maurice Swift, of Swift & Goodinson whose firm made the bookcase in Sheffield. My mother now aged 94 was on the Pilgrimage (then aged 20) Linda Ingham ([linda\\_ingham@tiscali.co.uk](mailto:linda_ingham@tiscali.co.uk))



SAINT, Pte, RICHARD S/8956.	PMDR
SARGEANT, Pte, FRANK VICTOR.	PLFL
SAUNDERS, Sgt, W G.	S12
SAVILLE, Pte, THOMAS ARTHUR.	N3
SAYELL, Cpl, E T, Pte, M, & Pte, S	PMD
SCOTT, 2 <sup>ND</sup> Lt, WALTER ELVIN.	N6
SCOTT, Lt, ELVIN ALFRED, MC. (4 CHAIRS)	N7
SCOTT, Lt, WALTER ELVIN, FATHER OF WALTER & ELVIN.	N6
SCOTT, Lt, F J	PLRL
SEALY, C N P F.	N6
SEARS, Rfn, ALFERD T.	PLFL
SEWELL, BLANCHE E B.	ALTER FLOWER TABLE LEFT
SEWELL, ELIZABETH S A.	ALTER FLOWER TABLE RIGHT
SHANKS, HENRY JOHN, Pte.	BAPR
SHURMER, HENRY, Pte. 46456	BAPR
SHAW, ALFRED, 24303	BAPR
SIM, JOSEPH, Pte. 14367	BAPR
SIMMONS, Tpr, DOUGLAS HENRY	PLFL
SINCLAIR, Maj, D H.	N12
SKRINE, Cpt, H L.	N2
SLATER, Lt, ARTHUR EDWARD, CBE.	PLFR
SMITH, Gnr, ARTHUR.)	
SMITH, L/Cpl ERNEST.)	PLFR SMITH, Pte,
FRED)	
SNOWDON, JAMES Pte, 5/3870, THOMAS Pte, 3886, RUTHERFORD O.	BAPL
SPENCER, Gdsm, WALTER	PLRL
SPRATT, Pte, ALBERT EDWARD	S10
SPRIGETT, RICHARD CHAMBERS	N6
STAPLETON, Rfn, ALFRED	PLFR
STEADMAN, Pte, ARTHUR	PMDR
STEELE, Gnr, FREDERICK.	PLRR
STICKLER, Pte, F G.	PMDR
STOOP, CQMS, G H.	S4
STRATHALLAN SCHOOL	
STUART, JAMES STERLING.	BW4
STURT, A, Pte	PMDL
SZABO, VIOLETTE	BAPL

41

TANK CORPS	CWR1
TOC H L.W.H. PILGRIMAGE 1934	N8
TONBRIDGE SCHOOL	3WNR

42

TAYLOR, Cpt, D E.	PLFR
TAYLOR, SgT, A E.	N7
TEDDER, HERBERT EDGAR.	S8
TENNANT, 2 <sup>ND</sup> Lt, CHRISTOPHER SEROCOLD.	BW8
TENNANT, OSWALD MONCRIEF.	COMMUNION RAIL
TERRY, Gnr, F	S2
TINLEY, Maj, W E F.	S8

TITTERINGTON, ROBERT, Sgt. 9914	BAPL
TOMLINSON, Pte, WILLIAM.	S9
TOTHILL, 2 <sup>ND</sup> Lt, G I F.	N9
TOUGHER, GEORGE, Pte, 24015	BAPR
TRICGALL, WALTER.	PMDR
TUCKER, J A.	N5
TURNER, Pte, B W. 3062.	PMDR
TURTON, Bdr, D F.	N1
TWIGG, Pte, WILLIAM.	PMDR
TYNAN, Pte, LEONARD.	PMDR
43	
36 <sup>TH</sup> ULSTER DIVISION.	BW2
UNIVERSITY COLLEGE SCHOOL, LONDON	3WNR
UPPINGHAM SCHOOL	BUTT R
44	
USHER, GEORGE. 31184	BAPL
46	
VALE, HENRY, Dvr.	BAPR
VARNDEAN BRIGHTON	2WNL
VESEY-FITZGERALD, 2 <sup>ND</sup> Lt, W H L.	N14
VIVIAN, Maj, GUY NOEL.	N2
VOICE, CHARLES, L/Cpl.	BAPR
47	
WATFORD GRAMMAR SCHOOL FOR BOYS	BUTT R
WELCH REGT.	RW
WELLINGTON COLLEGE	2WML
WELLINGTON SCHOOL	2WNRBUT
WELSH GUARDS	RW1
WELSH GUARDS	AW
WEST PARK GRAMMAR SCHOOL FOR BOYS	2WNR
WEST YORKSHIRE REGT.	RW3
WEST YORKSHIRE REGT, "BRADFORD PALS"	N2
WHITGIFT SCHOOL	3WNRBUTT
WILTSHRE REGT, DUKE OF EDINBURGH'S.	LMD2
WILTSHRE REGT, OLD PALS.	N12
WORCESTERSHIRE REGT.	CWR3
WORLD CRICKETER'S	FMR
WURTENBURG PRISON CAMP	SCREENS BEHIND CHOIR STALLS
48	
WAGSTAFF, THOMAS HERBERT.	S9
WAIDER, PERCY LOUIS.	S2
WALLEY, ALFRED MOSS, Pte. 3294	BAPL
WALTON, Pte, NORMAN.	PLFL
WATKINS, Pte IVOR	PMD
WATSON, CHARLES CECIL.	N11
WATSON, Lt, H J F.	N6
WATSON, Gnr, WILFRED.	PMD
WATSON, Lt, WILLIAM VERNON CROWTHER.	S1
WEAVER, Pte, M	S7
WELCH, Lt, W G F.	S5

WELLS, PATRICK.	WMD
WELTON, CLEMENT W., & MADELEINE.	CHAIR, NO NUMBER
WESTBY PERCIVAL St.G, C Cpt.	BAPR
WHITEMAN, Cpt, ORMONDE G.	1WNL
WHEATON, HAROLD, MBE.	ON VERTICAL PANEL PLRL
WHITGIFT SCHOOL	RW2ND BUTT
WHITHAM, Pte, F	S10
WHITROD, POPER HENRY, 2 <sup>ND</sup> Lt.	BAPL
WILLIAM, HRH, THE PRINCE.	BELL 3
WILLIAMS, Pte, J F.	S2
WILLIAMS, PtE, J R.	N1
WILLIAMS, Pte, T E.	PLRR
WILLIAMS, THOMAS SAMUEL, Pte. 36812	BAPR
WITTON, 2 <sup>ND</sup> Lt, GODFREY, MC.	PLFR
WOODS, 2 <sup>ND</sup> Lt, OLIVER TRELAWNEY	CSL
WRIGHT, GEORGE, Rfn. S/17587	BAPL

YORKSHIRE AND LANCASHIRE REGT.	AWL
--------------------------------	-----

## KNEELERS

AIRBORNE DIVISION (WW1)  
AUSTRALIAN COMMONWEALTH MILITARY FORCES  
BALUCH REGT.  
BEDFORDSHIRE REGT.  
BLACK WATCH (ROYAL HIGHLANDERS)  
BLUES & ROYALS (WW1)  
BOY'S BRIGADE (1914-18)  
BRIGADE OF GURKHAS (WW1)  
BRITISH TORCH OF REMEMBRANCE (WW1)  
BROOKWOOD LAST POST COMMITTEE (WW1)  
BUCKINGHAMSHIRE REGT.  
BUFFS, THE. (ROYAL EAST KENT REGT.)  
CANADIAN CORPS  
CHURCH LADS BRIGADE.  
COLDSTREAM GUARDS.  
COOMBS (ROSE E-MBE)  
COUNTY OF LONDON REGT, 10<sup>TH</sup> & 20<sup>TH</sup> BTTNS.  
CROCKEN HILL RBL. (HEXRABLE & SWANLEY)  
D DAY (NORMANDY) FELLOWSHIP (WW1)  
DCLL  
DUNKIRK VETRANS ASSOCIATION (WW1)  
DURHAM LIGHT INFANTRY.  
EAST LANCS REGT.  
ESSEX REGT.  
FLEET AIR ARM.  
FRIENDS OF THE IMPERIAL WAR MUSEUM.  
GLIDER PILOTS REGT (WW1).  
GLOUCESTER REGT.  
GORDON HIGHLANDERS.  
GRENADIER GUARDS.  
HAILEYBURY SCHOOL.  
HIGHLAND LIGHT INFANTRY.  
HUSSARS, 11<sup>TH</sup>, 18<sup>TH</sup> (QUEEN MARY'S OWN) & 20<sup>TH</sup>.  
IRISH GUARDS.  
KING'S OWN YORKSHIRE REGT.  
KING'S OWN SCOTTISH BORDERERS.  
KING'S ROYAL REGT. (LIVERPOOL)  
LANCASHIRE FUSILIERS.  
LEICESTERSHIRE REGT.  
LIFE GUARDS.  
LOYAL REGT.  
LOYAL SUFFOLK HUSSARS.  
MACHINE GUN CORPS.  
MANCHESTER REGT. (3 KNEELERS)  
MERCHANT NAVY. (3 KNEELERS)  
MIDDLESEX REGT.  
MONMOUTH SHIRE REGT, 3<sup>RD</sup>.  
NEW ZEALAND, THE COMMONWEALTH OF  
NORTHAMPTONSHIRE REGT.  
OXFORDSHIRE & BUCKINGHAMSHIRE LIGHT INFANTRY (4 KNEELERS)

**PARACHUTE REGIMENT (4 KNEELERS)**  
**POPPY KNEELERS (4)**  
**POST OFFICE RIFLES**  
**PRISONERS OF WAR-THE NATIONAL EX-PRISONERS OF WAR ASSOCIATION**  
**“INTREPIDUS”**

**PUNJAB, 2<sup>ND</sup> REGT.**  
**QUEEN ALEXANDRA’S IMPERIAL MILITARY NURSING SERVICE**  
**QUEEN ALEXANDRA’S ROYAL ARMY NURSING CORPS**  
**QUEEN VICTORIA’S RIFLES**  
**QUEEN’S BAYS, 2<sup>ND</sup> DRAGOONS**  
**QUEEN’S OWN WEST KENT REGT. (4 KNEELERS)**  
**QUEEN’S ROYAL REGT, WEST SURREY (2 KNEELERS)**  
**QUEEN’S WESTMINSTER RIFLES**  
**H M QUEEN ELIZABETH 11. 11/11/1998 REMEMBRANCE**  
**RECONNAISSANCE REGT, 49<sup>TH</sup> WEST RIDING.**  
**RIFLE BRIGADE**  
**ROYAL AIR FORCE (3 KNEELERS)**  
**ROYAL AIR FORCE, 64 SQDN.**  
**ROYAL AIR FORCE, 201 SQDN.**  
**ROYAL AIR FORCE BOMBER COMMAND, 619 SQDN.**  
**ROYAK AIR FORCES ASSOCIATION.**  
**ROYAL ARMY SERVICE CORPS (2 KNEELERS)**  
**ROYAL ARMY VETERINARY CORPS.**  
**ROYAL ARTILLERY (4 KNEELERS)**  
**ROYAL BERKSHIRE REGT. (2 KNEELERS)**  
**ROYAL BRITISH LEGION, CROCKERHILL, SWANLEY & HEXTABLE BRANCH**  
**ROYAL EAST KENT REGT see “THE BUFFS” 92 KNEELERS)**  
**ROYAL EAST SURREY REGT.**  
**ROYAL ENGINEERS, (2 KNEELERS)**  
**ROYAL FLYING CORPS.**  
**ROYAL FUSILIERS (4 KNEELERS)**  
**ROYAL FUSILIERS 14<sup>TH</sup> BTTN, LONDON REGT. Pte WILLIAM KING**  
**ROYAL GUERNSEY LIGHT INFANTRY (2 KNEELERS)**  
**ROYAL GURKHA RIFLES**  
**ROYAL HAMPSHIRE REGT.**  
**ROYAL HORSE ARTILLERY-Pte JACK SHOWELL.**  
**ROYAL HUSSARS, 11<sup>TH</sup>.**  
**ROYAL HUSSARS, 13<sup>TH</sup>/18<sup>TH</sup>.**  
**ROYAL HUSSARS, 15<sup>TH</sup>/19<sup>TH</sup>.**  
**ROYAL INSKILLING DRAGOON GUARDS. 5<sup>TH</sup>.**  
**ROYAL INSKILLING FUSILIERS.**  
**ROYAL IRISH RANGERS.**  
**ROYAL IRISH FUSILIERS (2 KNEELERS)**  
**ROYAL LANCERS 9<sup>TH</sup>/12<sup>TH</sup>.**  
**ROYAL LANCERS, 12<sup>TH</sup>.**  
**ROYAL LIECESTER REGIMENT**  
**ROYAL LINCOLNSHIRE REGT.**  
**ROYAL MONMOUTHSHIRE REGT.**  
**ROYAL MARINES.**  
**ROYAL NORFOLK FUSILIERS**  
**ROYAL NORFOLK REGT. (2 KNEELERS)**  
**ROYAL PIONEER CORPS.**  
**ROYAL REGIMENT 2<sup>ND</sup> BTTN.**  
**ROYAL SCOTS FUSILERS (2 KNEELERS)**  
**ROYAL SCOTS, THE ROYAL REGT.**  
**ROYAL SIGNALS (2 KNEELERS)**  
**ROYAL SUFFOLK REGIMENT**  
**ROYAL SUFFOLK YEOMANRY-DUKE OF YOR’S OWN**  
**ROYAL SUSSEX REGT, (4 KNEELERS)**

**ROYAL WARWICKSHIRE REGT. (2 KNEELERS)**  
**ROYAL WELCH FUSILIERS (2 KNEELERS)**  
**SCORS GUARDS**  
**SCOTTISH BORDERERS**  
**SEAFORTH HIGHLANDERS**  
**SHERWOOD FORESTERS (2 KNEELERS)**  
**SOMERSET LIGHT INFANTRY**  
**SOMME, THE 1914/1916**  
**SOUTH AFRICA, THE REPUBLIC OF**  
**SOUTH WALES BORDERERS (3 KNEELERS)**  
**SPECIAL AIR SERVICE REGIMENT (2 KNEELERS)**  
**STAD IEPEL- THE CITY OF IEPEL**  
**SUFFOLK REGT.**  
**TANK CORPS.**  
**WELCH REGIMENT (4 KNEELERS)**  
**WELSH GUARDS**  
**WILTSHIRE REGT. (2 KNEELERS)**  
**WORCESTERSHIRE REGT. (2 KNEELERS)**  
**WEDDING KNEELER. DONATED BY IAN THORPE.**  
**YORKSHIRE AND LANCASHIRE REGT.**  
**“YMCA” THE YOUNG MEN’S CHRISTIAN ASSOCIATION**